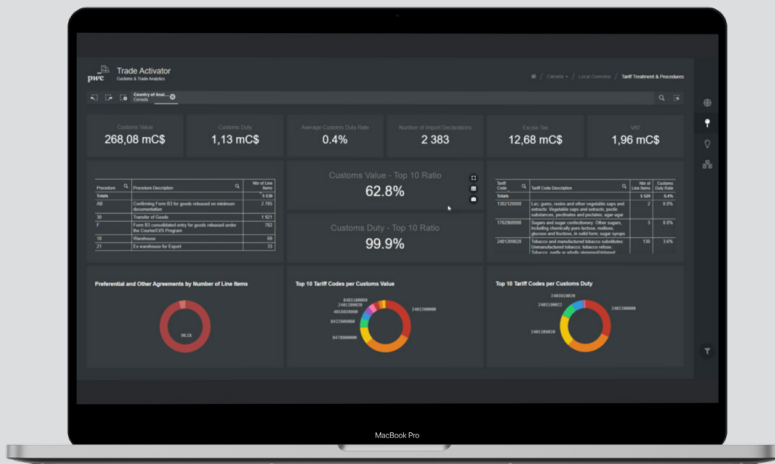




Trade Activator

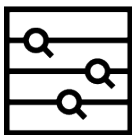
A PwC Product

Analysis and optimization of supply chains and customs clearance



Trade Activator analyzes customs data to reveal past and future optimization and savings opportunities as well as potential irregularities. Based on the results, future adjustments – due to internal and external factors – in the supply chain can be calculated and visualized.

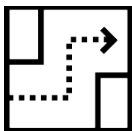
With Trade Activator, we can request your import and export data from the customs authorities of various countries – with a minimum of effort on your part.



Analyze the past: Gain insights of your customs activities and identify potential inefficiencies and lack of compliance.



Optimize the present: Take the opportunity to apply for refunds and avoid fines.



Plan for the future: Optimize your customs processes to minimize future customs duties and risks.

Optimize your supply chain and trade compliance. We are happy to advise you!

Dr. Michael Tervooren | Partner Customs & International Trade | michael.tervooren@pwc.com
Melanie Behle-Schalk | Manager Customs & International Trade | melanie.behle-schalk@pwc.com
Sarah Schrick | Manager Customs & International Trade | sarah.schrack@pwc.com